

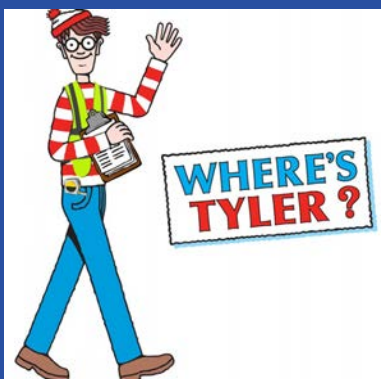


Welcome to
~ UNDER THE DOME ~
Mercer County's Monthly Newsletter
Our Third Edition - August 2024

If you haven't signed up directly to receive this newsletter each month, you can do so [here](#). Feel free to share this newsletter with family and friends so they can receive it as well.

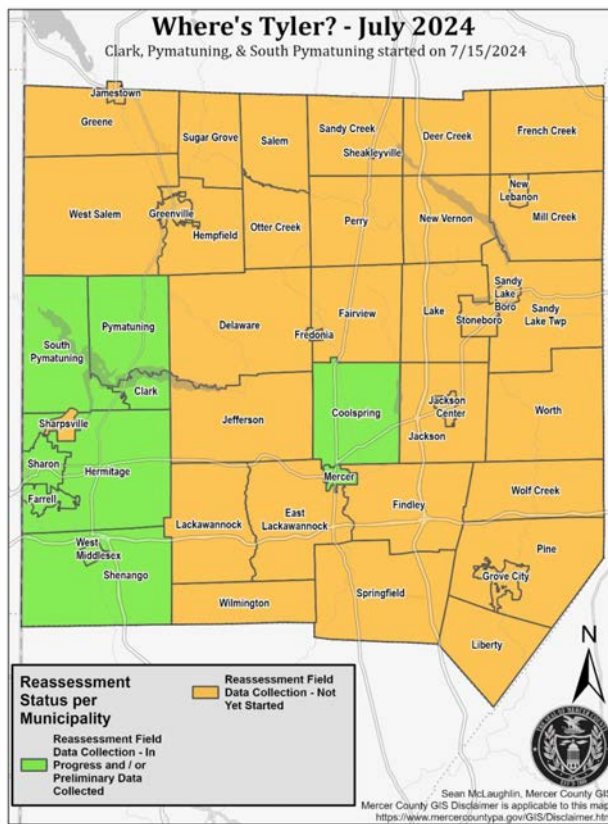
**MERCER COUNTY HAS OPENINGS IN SEVERAL
DEPARTMENTS & FACILITIES.
CURRENT POSITIONS CAN BE ACCESSED BELOW.**

EMPLOYMENT OPPORTUNITIES

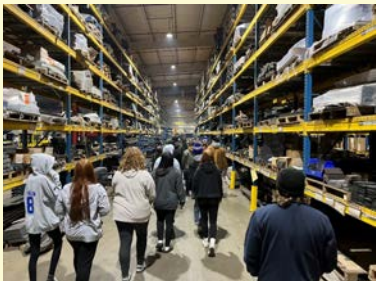


**Mercer County Tax
Reassessment
*WHERE'S TYLER?***

This will be a monthly feature in our newsletter to provide updates on the County Tax Reassessment that is currently taking place. We'll provide updates regarding what sections of the County have already been visited by TYLER TECHNOLOGIES, the company that has been hired to complete the long overdue reassessment of all Mercer County properties. An informational pamphlet is available below that can hopefully answer many of the questions residents may have. The Commissioners are also happy to answer your questions and concerns regarding the reassessment. **Keep updated on the Reassessment Project [HERE](#).**



Tax Reassessment FAQ Flyer



Just a few of the many initiatives that have taken place in the first few years of their existence.

ABOVE: Seventeen students toured Miller Industries to learn more about careers in manufacturing.

AGENCY SPOTLIGHT

PNDC's HOMEGROWN INITIATIVE

Revitalizing Mercer County: Retaining Our Talented Young Minds

Since the exodus of the steel industry, Mercer County has dealt with a consistent, annual population decline. With a substantial “brain drain” comes a decreasing talent pool, shrinking customer base, and a decreasing interest in out-of-state businesses relocating to Mercer County. Most importantly, however, we are losing our well-educated, hardworking children and grandchildren, to far away communities in search of ‘greener pastures.’

READ MORE



The Future Leaders hosted a booth to meet with students during the Business & Industry Career Expo, hosted by West Central Job Partnership.



Dan Bolena, with Imparo Coaching, hosted a free Young Professionals Advisory Group, offering executive coaching to young men and woman.



For the first time ever, over 400 Mercer County students attended the Builders Trade Expo to learn more about skilled labor opportunities.

Mercer County Departments and the services they provide to residents.



Domestic Relations

Mercer County Domestic Relations Section is a branch of the Mercer County Court of Common Pleas. This office serves Mercer County families by establishing and enforcing child and spousal support orders. Mercer County residents can file an application for child and/or spousal support or file for a modification of an existing order in person or online.

In person filing: Monday- Friday (except holidays) from 8:30 AM - 1:15 AM & 1:15 PM - 3:15 PM. Domestic Relations Section is located in the North Courthouse Annex at 121 North Pitt Street.

Online filing address is : www.childsupport.pa.us

If filing in person, plan on being in the office about 45 minutes – 1 hour. If filing online, a staff member will contact you if any additional information is needed. Once the case is open, a conference will be schedule for the first available date. Parties will be notified of the date via mail.

Mercer County Domestic Relations Section works very hard to serve our clients effectively and efficiently. In 2023, Mercer County Domestic Relations Section collected \$8,762,819 in support payments for Mercer County children and families. An interesting fact is that in 1995, President Bill Clinton established August as Child Support Awareness Month in the United States. Mercer County residents can visit Mercer County Domestic Relations Section anytime during normal business hours, Monday-Friday (except holidays), 8:30 AM- 4:30 PM, or call 724-662-3800 ext. 2600, to inquire about your case, or other services we provide.

AUGUST 2024 -ELECTION CORNER TOPIC:

- **VOTER LIST
MAINTENANCE**

FYI - The County is currently in the midst of its annual voter registration list maintenance, where voters who may have moved are contacted. These voters are removed from the rolls, or made inactive, based on their response. This list maintenance is in addition to our daily removal of voters who die or inform us of a change of address. In a given week, Mercer County removes between 20 and 80 voters, and does address changes for more than 80 voters.



Make sure you have your voting information up to date with the Elections Office for this very important election year. You can call to inquire at 724-662-7542.

See the flyer below.

Be Prepared for Election Day- NOVEMBER 5, 2024!



It is important to be prepared for Election Day. Before November 5th, there are some simple things you can do to make sure your Election Day goes off without a hitch.

1. Check that your registration information is accurate. You can go to <https://www.vote.pa.gov> and click "Voter Registration" and there is an option to check your registration status. You can also call the **Mercer County Elections Office—724-662-7542**—and we can confirm your information as well.
2. If your information is incorrect, you can change it on the same website, or you can get a voter registration form at any library or post office.
 - For the 2024 General Election, the deadline for registering to vote or changing your voter registration information is October 21st.
3. Check the location of your polling place. Some polling locations have moved since the last presidential election. You can go to <https://www.vote.pa.gov> and click on "Voting at a Polling Place: Find Your Polling Place" and it will give you the location of your polling place.
4. If you need assistance, no problem! A voter can bring someone to assist them at the polls, typically a family member or friend. If you get to the polls and realize you need assistance, a poll worker can assist you with marking your ballot. You will just need to complete a voter assistance form.
5. If you cannot make it to the polls on Election Day, request a mail ballot. You can request a mail ballot online at <https://www.vote.pa.gov> or you can call the election office and we will send you an application. Starting in October, a registered voter can also come to the Mercer County elections office (130 N. Pitt St, Mercer) and request a mail ballot over the counter. You can either take the ballot home to complete it and bring it back, or do so at our office in one of our voting booths, and turn in the ballot that day.
 - For the 2024 General Election, the deadline to request a Mail Ballot is October 29th.

When in doubt, call the Elections Office
and we can answer your questions!!
724-662-754225



MERCER COUNTY CONTACT INFORMATION TO KEEP ON HAND

ELECTED OFFICES

Clerk of Courts 724.662.7548
Criminal cases, juvenile cases, CYS cases

Commissioners 724.662.7531

Controller 724.662.7507

Coroner 724.475.3404

District Attorney 724.662.7587

Prothonotary 724.662.7561
Civil cases, family court, divorce, child custody, protection from abuse cases (PFAs), and passports

Sheriff 724.662.6135
Concealed carry permits

Recorder of Deeds 724.662.7573
Property deeds

Register of Wills & Clerk of Orphans Court 724.662.7548
Probate of wills, inheritance tax, marriage licenses, estates, guardianships, adoptions

Treasurer 724.662.7508
Boat registration, dog license, fishing license, hunting license, sportsmen firearm permit, bingo license, small games of chance license

DEPARTMENTS

ARD 724.662.7530
Bridge Department 724.662.4977
Children & Youth Services 724.662.2703
Cooperative Extension 724.662.3141
Cost & Collections 724.662.7510
Courts 724.662.7527
Domestic Relations 724.662.3800 ext. 2600
Elections/Voter Registration 724.662.7542
GIS/Maps 724.662.3800 ext. 2444
House Arrest 724.662.7521
Human Resources 724.662.7514
IPP (Intermediate Punishment Program) 724.662.7518
Jail 724.662.2700
Juvenile Probation 724.662.7501
MH/ID 724.662.6715
Open Records/724.662.3800 ext. 2512
Public Defender 724.662.7628
Public Safety 724.662.6100
Soil Conservation District 724.662.2242
Tax Assessment 724.662.7551
Tax Claim 724.662.7550
Veterans Affairs 724.662.7511
Victim Witness 724.662.7589

OTHER

Area Agency on Aging 724.662.6222
Behavioral Health Commission 724.662.2230
Mercer County Council of Governments 724.981.1561
Mercer County Housing Authority 724.342.4000
Mercer County Regional Planning Commission 724.981.2412
Penn-Northwest Development Corporation 724.662.3705
VisitMercerCounty 724.901.6024

**Public meetings are held each Thursday at 3:00 pm and can be viewed remotely.
Access information is available at www.mercercountypa.gov**

Looking for something to do in August? Here are a few things that might interest you!

FREE *Riverside*
COMMUNITY PARK
2024 Summer Concert Series

The Seven Wonders
Fleetwood Mac
Tribute Band
August 12th
7 pm
Amphitheater
6 String Blvd.
Opening Act 5:30pm



Riverside Park, Greenville, PA



Celebrating 24 years of working to end hunger!

MERCER COUNTY FOOD BANK

14th Race to End Hunger

5K/2 Mile Walk and Kid's Fun Run

SATURDAY, AUGUST 3, 2024

TIME
7:00am - Registration begins
8:30am - Kid's Fun Run begins
9:00am - Run/Walk begins

LOCATION
BCS at Lindbergh, 3923 Innovation Way, Hermitage, PA

REGISTRATION
For Mail-in Registration: Make checks payable to MCFB 5K Race/2 Mile Walk and mail to: Mercer County Food Bank, 100 S. Shoppville Ave., Suite A, Sharon, PA 15146.
For Online Registration: Scan QR code or go to www.mercercountyfoodbank.org
Mail-in and Online registration ends Friday, July 26th

AWARDS
• Top 3 Male & Female overall
• Top M&F Masters (50+)
• Top 3 M&F by Age Group: 9 & under, 10-14, 15-19, 20-24, 25-29, 30-34, 35-39, 40-44, 45-49, 50-54, 55-59, 60-64, 65-69, 70+
• Kid's Fun Run (5 years and under) participants will receive a ribbon.

FREE
Includes Race T-Shirt (registrations received after Monday, July 15, 2024 cannot be guaranteed a shirt)
• \$20 pre-registration
• \$22 same-day registration.

CONTACT
Patty Tucker, Development Coordinator
ptucker@mercercountyfoodbank.org
724.981.0353 ext 103

Starve Hunger - Feed Hope
mercercountyfoodbank.org

FEEDING AMERICA

Lake to Lake Paddle Challenge

August 24, 2024

The 30 Mile Challenge - Competitive Class
The 15 Mile Challenge - Adventure Class

The Lake to Lake Paddle Challenge is a great paddling experience for all skill levels. Paddle on the beautiful waterways of Mercer County and enjoy the scenic views.

15 Mile Challenge
Starts at: 8:00 AM
Ends at: 12:00 PM
Registration Fee: \$20
Includes: Race T-Shirt, Water, and Snacks

30 Mile Challenge
Starts at: 8:00 AM
Ends at: 12:00 PM
Registration Fee: \$25
Includes: Race T-Shirt, Water, and Snacks

CONTACT
Mercer County Food Bank
100 S. Shoppville Ave., Suite A
Sharon, PA 15146
724.981.0353

www.LakeToLakePaddle.com

Healthy Food Pop-up Pantry

The Healthy Food Pop-up Pantry is a free event open to everyone and offers healthy foods, recipes, and more.

Every second Friday of the month
11 a.m. - 1 p.m.

July 12 October 11
August 9 November 8
September 13 December 13

AHN Grove City parking lot
631 North Broad Street Ext.
Grove City, PA 16127

AHN GROVE CITY

14th Race to End Hunger

Saturday, August 3, 2024

MERCER COUNTY FOOD BANK

REGISTRATION FORM & WAIVER

Name: _____ Age: _____ Gender: _____
Phone: _____ Email: _____
Address: _____

I will participate in the: 5K Run 2 Mile Walk Free Kid's Fun Run (5 years and under)

T-Shirt Size: Adult: S M L XL XXL Youth: S M L XL

Team Name: _____

Signature (Parent signature if participant is under 18): _____

I voluntarily participate in the Race to End Hunger and acknowledge that I am not experiencing any symptoms of stress such as cough, shortness of breath or difficulty breathing, fever, repeated shaking with chills, muscle pain, headache, sore throat or nausea or loss of taste or smell.

I hereby release and agree to hold Mercer County Food Bank (MCFB) harmless from, and waive on behalf of myself, my heirs, and any personal representatives any and all causes of action, claims, demands, damages, costs, expenses and compensation for damage or loss to myself and/or property that may be caused by any act, or failure to act of the MCFB, or that may otherwise arise in any way in connection with any events of the MCFB. I understand that this release discharges MCFB from any liability or claim that I, my heirs, or any personal representatives may have against the MCFB with respect to any bodily injury, illness, death, medical treatment, or property damage that may arise from, or in connection to, my participation in the Race to End Hunger.

I hereby give permission to MCFB to use my photos and likeness in all forms and media for advertising, profiles, news, press, editorial, offering without restriction or compensation. I hereby release and hold harmless MCFB and/or the photographer all forms of claims and liability related to my photo usage.

Signature Required: _____ Date: _____
(Parent signature if participant is under 18)

Please send completed registration form with check payable to MCFB 5K Run/2 Mile Walk (\$20 pre-registration fee) to Mercer County Food Bank, 100 S. Shoppville Ave., Suite A, Sharon, PA 15146.

THE NORTHWEST COMMISSION PRESENTS

MUNICIPAL GRANT WRITING WORKSHOP

Find out what grants are available for your projects, when and how to write the grants, and how to get those dollars to your municipality!

Join us for one or both of these sessions, ask questions, and get answers.
Please register by emailing nwc@northwestpa.org

Join us for one or both of these sessions, ask questions, and get answers.
Please register by emailing nwc@northwestpa.org

Two Great Chances to Join!

September 19, 2024 | 10 AM - NOON
CORRY HI D
221 N. Conner St., Corry

September 26, 2024 | 10 AM - NOON
GROVE CITY BOROUGH BUILDING
123 W. Main St., Grove City

Farrell Festival

10:30 AM - 8:30 PM

Aug. 10, 2024

On Idaho Street in Farrell

50/50 Raffle & Farrell Festival T-Shirts for Sale
5M-XL \$12
2X-4X \$15

Featuring MC/DJ Geenonomy

Schedule
1 pm: Poetry reading by Danielle Richardson-Wilder
3 pm: Redeemed Sanctuary Mime Group
4 pm: Line Dancing with Shelly Doris
6 - 8 pm: Bill Henry Band

Sponsored by Farrell Strategic Planning & Economic Development Committee (S.P.E.D.)

BAUGHMAN FAMILY Community Center

WIFFLE BALL WEDNESDAYS

ONE TIME FEE
MEMBERS - 30\$
NON MEMBERS - 55\$

AGES 6-8 (COACH PITCH)
11AM-1230PM
AGES 9-12
1230PM-2PM

KIDS WILL BE SPLIT INTO EVER TEAMS AND PLAY BALL!

IF NOT ENOUGH PARTICIPANTS FOR 2 GROUPS WE WILL HAVE 1 GROUP PLAY AT 11AM

July 24, 31 & August 7, 14

CALL OR STOP IN TO REGISTER
71 COLUMBIA AVENUE GREENVILLE PA 724.917.2857.

FARRELL NATIONAL NIGHT OUT

AGAINST CRIME

FREE EVENT
TUESDAY, AUGUST 6 2024
FARRELL LITTLE LEAGUE FIELD

VENDORS | FOOD | GIVEAWAYS

5PM

CITY OF FARRELL
FARRELL POLICE DEPARTMENT
FARRELL STRATEGIC PLANNING AND ECONOMIC DEVELOPMENT COMMITTEE
FARRELL RECREATION COMMITTEE
OPERATION LIGHTHOUSE

BUHL MANSION

EXCLUSIVE GUIDED HISTORY TOURS

August 2024

Thursdays Sundays
1 8 15 4 11 18
5 pm & 7 pm 1 pm & 3 pm

Tickets Required!

Experience the Gilded Age

BUHL MANSION
EXCLUSIVE GUIDED HISTORY TOURS

August 2024
Thursdays Sundays
1 8 15 4 11 18
5 pm & 7 pm 1 pm & 3 pm

AUGUST 3, 2024

Hosted By: The Moose Lodge of Greenville #276

The Salvation Army of Greenville
Presents: "SCRABBLE" BIKE RUN & CAR CRAWL FUNDRAISER!

\$25 ENTRY FEE Includes: Meal & T-Shirt
\$10 Additional Ride/Includes meal
9:30 Registration
10-65 Bidding of The Bikes
10:00 Kickstarts up "The Gremlin down!"

LOTS OF PRIZES, FOOD, & BASKET AUCTIONS!

For Info Call: (724) 588-3390 Register Now!

**COURTHOUSE? A DETAILED BROCHURE CAN
BE ACCESSED BELOW, OR COPIES ARE
AVAILABLE IN THE COMMISSIONERS' OFFICE.**

**A Self-Guided Tour of the
Mercer County Courthouse**



Your Mercer County Courthouse

Admiring the majestic courthouse commanding the center of Mercer's 'diamond,' it is hard to imagine that the hallowed halls of justice originated from such humble beginnings, having previously served the county's citizenry from a tavern, a log structure, a school and two prior courthouse buildings. The Mercer County Courthouse of today has been called a physical, architectural, and historical landmark, and with good reason.

The History of the Mercer County Courthouse

**LAWRENCE/MERCER
COUNTY
RECYCLING/SOLID
WASTE DEPARTMENT**

**Reach out if your municipality
might be interested in hosting a
storage area for the County's
glass recycling program. They
can be reached @ 724-658-6925**

Hard-to-Recycle (H2R) 2024 Event Calendar



NEW in 2024: Bring us your BOOKS!

YES

- Holiday Lights
- Thermostats
- Shoes (athletic pairs, no holes)
- Media
- VHS Tapes
- Cassette Tapes
- CDs and DVDs
- Floppy disks
- Plastic Bags & Film
- Books

NO

- Cell Phones
- Fluorescent Tubes
- CFLs
- Electronics
- Paint, Chemicals, etc.
- Batteries

Visit the Department's **Electronics Recycling Guide** for the proper disposal of

The Lawrence-Mercer Recycling/Solid Waste Department offers a program for the collection of select hard-to-recycle items. Collection days are held the 2nd Tuesday of each month from 9 AM to 1 PM, and transition between locations in Mercer and Lawrence counties. This makes the program accessible to as many people as possible. Please contact us with any questions about acceptable materials.

2024 LOCATIONS:

January 9	Lawrence County Recycling/Solid Waste Dept. Gettings Annex at Lawrence County Courthouse, New Castle, PA
February 13	Slippery Rock Township Municipal Building 4334 US Route 422, New Castle, PA
March 12	Springfield Township Municipal Building 406 Old Ash Road, Mercer, PA
April 9	Hermitage City Building 800 North Hermitage Road, Hermitage, PA
May 14	North Beaver Township Road Department Garage 105 Sixth Street, Elwood City, PA
June 11	Elwood City Public Works Garage 278 South Mercer Street, Greenville, PA
July 9	Hempfield Township Municipal Building 278 South Mercer Street, Greenville, PA
August 13	City of Farrell Municipal Building 500 Roemer Boulevard, Farrell, PA
September 10	Mahoning Township Building 4538 West State Street, Hinckley, PA
October 8	New Castle Public Library 207 East North Street, New Castle, PA
November 12	Munnell Run Farm/Mercer County Conservation District 753 Greenville Road, Mercer, PA
December 10	Lawrence County Recycling/Solid Waste Dept. Gettings Annex at Lawrence County Courthouse, New Castle, PA

Program Details:

- This program is for **RESIDENTIAL** households only. No commercial or institutional materials are accepted.
- The program is currently free.
- Materials collected are subject to change depending on costs and markets.

Visit our webpages or follow us on Facebook!
lawrencecountypa.gov/recycling and mercercountypa.gov/recycling

PRC TRAVELING GLASS RECYCLING BIN

Sat. August 31 - Thurs. Sept. 5, 2024
7 AM - Sundown

SPRINGFIELD TWP

Springfield Township Municipal Building
406 Old Ash Road, Mercer, PA 16137

SELF-SERVE DROP OFF

Location under video surveillance

TYPES OF GLASS ACCEPTED

- All colors of glass bottles, jars and jugs ONLY
- Caps, lids and labels are acceptable
 - Empty all containers



PRESENTED BY



SPONSORS



Owens-Illinois, Inc.

CAP Glass

NOT ACCEPTED

- cut glass
- glass bakeware
- mirrors
- porcelain and ceramics
- stemware
- light bulbs
- TVs
- window glass
- other materials including recyclables

Support PRC programs TODAY
www.prc.org/donate

For a complete schedule of PRC's Traveling Glass Bin locations, visit prc.org/glass

PRC TRAVELING GLASS RECYCLING BIN

Sat. Sept. 28 - Thurs. Oct. 3, 2024
7 AM - Sundown

HERMITAGE

Hermitage Fire Station #3
541 Mercer Avenue, Hermitage, PA 16148
(Across from Morefield Cemetery)

SELF-SERVE DROP OFF

Location under video surveillance

TYPES OF GLASS ACCEPTED

- All colors of glass bottles, jars and jugs ONLY
- Caps, lids and labels are acceptable
 - Empty all containers



PRESENTED BY



SPONSOR



CITY OF HERMITAGE

Owens-Illinois, Inc.

CAP Glass

NOT ACCEPTED

- cut glass
- glass bakeware
- mirrors
- porcelain and ceramics
- stemware
- light bulbs
- TVs
- window glass
- other materials including recyclables

Support PRC programs TODAY
www.prc.org/donate

For a complete schedule of PRC's Traveling Glass Bin locations, visit prc.org/glass

MERCER COUNTY

foster
I ^ care .

One person can make a difference

What are the requirements to be a foster parent?

You must:

- Be at least 21 years of age.
- Be free from communicable diseases or health problems that impair your ability to care for a child.
- Be mentally and emotionally stable.
- Be able to meet your financial obligations and have a consistent source of income.
- Complete the required training hours.
- Complete a home study with the Agency and receive a favorable recommendation.
- Obtain three clearances: FBI Fingerprinting, Child Abuse and PA State Police, and pass these checks to become a certified resource family.

Who are foster parents?

The Agency recruits resource families from all different backgrounds, races, cultures, genders, ethnicities, and lifestyles. The Agency appreciates that each resource parent has a unique history and outlook on life that enables them to be great resource parents. Resource families come in all shapes and sizes. They may be comprised of one parent or two parents, and they may have multiple biological children or no biological children. A resource family may be a single income or multi-income family. They may own or rent their home, and they may have many pets or no pets.

Resource parents are willing to provide temporary or permanent care for a child who needs to be placed outside of their natural home. They understand that the Agency's primary goal for the child is always to reunify the child with their natural parents and family. Resource parents work with the Agency and natural family to try to achieve this goal. If reunification is not feasible, the concurrent goal is adoption.

We are currently recruiting...

- Do you have a strong support system of family and/or friends who are willing to support you through this process?
- Are you a patient person?
- Are you willing to work with a foster child's biological family?
- Are you willing to provide care and love to children without expecting anything in return except the rewarding knowledge that you are helping a child and family in need?
- Are you willing and able to deal with a child who may have been physically, mentally and/or sexually abused or neglected?
- Are you willing to transport a foster child to appointments, court hearings, visits with their natural families, etc.?
- Are you willing to be involved with a child's biological parents in order to make the child feel more secure, comfortable and loved?
- Are you willing to role model positive and appropriate parenting to a child's biological parents?
- Are you willing to have social workers in your home?

If you answered yes to these questions, then becoming a resource parent may be the right choice for you!

Something to consider: What types of children can you handle at this time? Consider the age, race, and gender of a child. Your resource caseworker would discuss with you preferences that you have and what you feel you are able to commit to as a resource parent. Please be aware that the Agency is not always aware of each child's behavior or needs at the time of placement.

If you are interested, please contact us at (724)662-2703 and ask to speak to a Resource Care Worker about becoming a resource parent!



YOUTH MENTAL HEALTH FIRST AID

WHY YOUTH MENTAL HEALTH FIRST AID?

Youth Mental Health First Aid teaches you how to identify, understand and respond to signs of mental health and substance use challenges among children and adolescents ages 12-18.

10.2%

of youth will be diagnosed with a substance use disorder in their lifetime.

Source: Youth Mental Health First Aid**

1 IN 5

teens and young adults lives with a mental health condition.

Source: National Alliance for Mental Illness*

50%

of all mental illnesses begin by age 14, and 75% by the mid-20s.

Source: Archives of General Psychiatry***

WHO SHOULD KNOW MENTAL HEALTH FIRST AID?

- Teachers.
- School Staff.
- Coaches.
- Camp Counselors.
- Youth Group Leaders.
- Parents.
- Adults who Work with Youth.

WHAT MENTAL HEALTH FIRST AID COVERS

- Common signs and symptoms of mental health challenges in this age group, including anxiety, depression, eating disorders and attention deficit hyperactive disorder (ADHD).
- Common signs and symptoms of substance use challenges.
- How to interact with a child or adolescent in crisis.
- How to connect the youth with help.
- Expanded content on trauma, substance use, self-care and the impact of social media and bullying.

Learn how to respond with the Mental Health First Aid Action Plan (**ALGEE**):

- A**ssess for risk of suicide or harm.
- L**isten nonjudgmentally.
- G**ive reassurance and information.
- E**ncourage appropriate professional help.
- E**ncourage self-help and other support strategies.

EARN ACT 48 Credits/Continuing Education
7.5 hours

FREE CLASS

Three dates to choose from:
August 20th 8:00am-3:00pm
Sept 18th 8:00am-3:00pm
Oct 4th 8:00am-3:00pm

Mercer County Behavioral Health Commission
8606 Sharon-Mercer Rd
Mercer, PA 16137
Contact information: Amy Hesselgesser
724-662-1550 ext. 147
amy.hesselgesser@mcbhc.org



GIS Dept & Online Services

Access our online maps & applications

[Go to GIS Dept Homepage >](#)



Land Records Search

Access Recorder of Deeds information online.

[Go to Recorders Homepage >](#)



Buy Dog Licenses Online

Order a Dog License online today.

[Click here to buy A Dog License >](#)

Above are 3 of the many Helpful Links available on the Mercer County website. You can click on the box

above to see the entire list of links.

MERCER COUNTY COURTHOUSE
125 SOUTH DIAMOND STREET
MERCER PA 16137
724-662-3800

WWW.MERCERCOUNTYPA.GOV

FOLLOW US



Mercer County | 125 S. Diamond Street Suite 103 | Mercer, PA 16137 US

[Unsubscribe](#) | [Update Profile](#) | [Constant Contact Data Notice](#)



Try email marketing for free today!